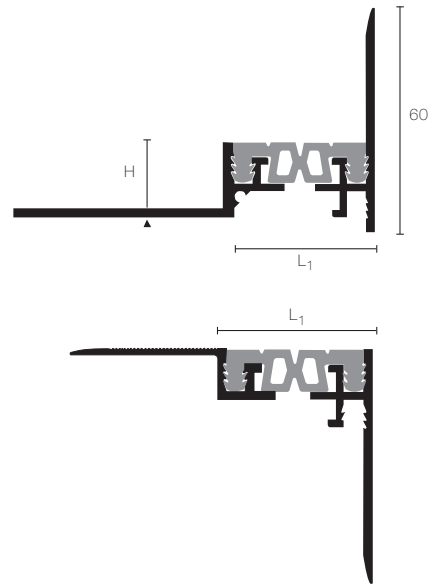


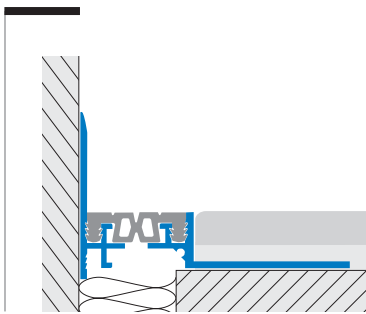
modular corner structural joints and joint covers

jointec™ P



The structural joints series JOINTEC GE, GM and GD are all transformable into wall-to-floor corner joints for perimeter applications. **JOINTEC P** is a multipurpose lateral anchorage aluminium profile, which can be used either upwards, to be fixed on the wall, or downwards, hidden in the perimeter floor joint.

Illustrated scale dimension 1:2



JOINTEC GEP/GELP Natural Aluminium gap width 40/50 mm

Perimeter version of the structural joints series GE/GEL, with rubber insert in either 37 or 47 mm width.

Material: Extruded Natural Aluminium

Insert: Resinprene

Colours of insert*: Black (suggested), Cement Grey

Length: 4,00 metres



JOINTEC GMP/GMLP Natural Aluminium gap width 40/50 mm

Perimeter version of the structural joints series GM/GML, with rubber insert in either 37 or 47 mm width.

Material: Extruded Natural Aluminium

Insert: Resinprene

Colours of insert*: Black (suggested), Cement Grey

Length: 3,00 metres



JOINTEC GDP/GDLP Natural Aluminium gap width 43/53 mm

Perimeter version of the structural joint series GD/GDL, with rubber insert in either 37 to 47 mm width.

Material: Extruded Natural Aluminium

Insert: Resinprene

Colours of insert*: Black (suggested), Cement Grey

Length: 4,00 metres



H=mm	L ₁ =mm	Finish	Art.
20	40	Alum. + insert	GEP 200 AN 51/23
50	40	Alum. + insert	GEP 500 AN 51/23
20	50	Alum. + insert	GELP 200 AN 51/23
50	50	Alum. + insert	GELP 500 AN 51/23

H=mm	L ₁ =mm	Finish	Art.
35	40	Alum. + insert	GMP 350 AN 51/23
75	40	Alum. + insert	GMP 750 AN 51/23
35	50	Alum. + insert	GMLP 350 AN 51/23
75	50	Alum. + insert	GMLP 750 AN 51/23

H=mm	L ₁ =mm	Finish	Art.
12	43	Alum. + insert	GDP 400 AN 51/23
12	53	Alum. + insert	GDLP 500 AN 51/23