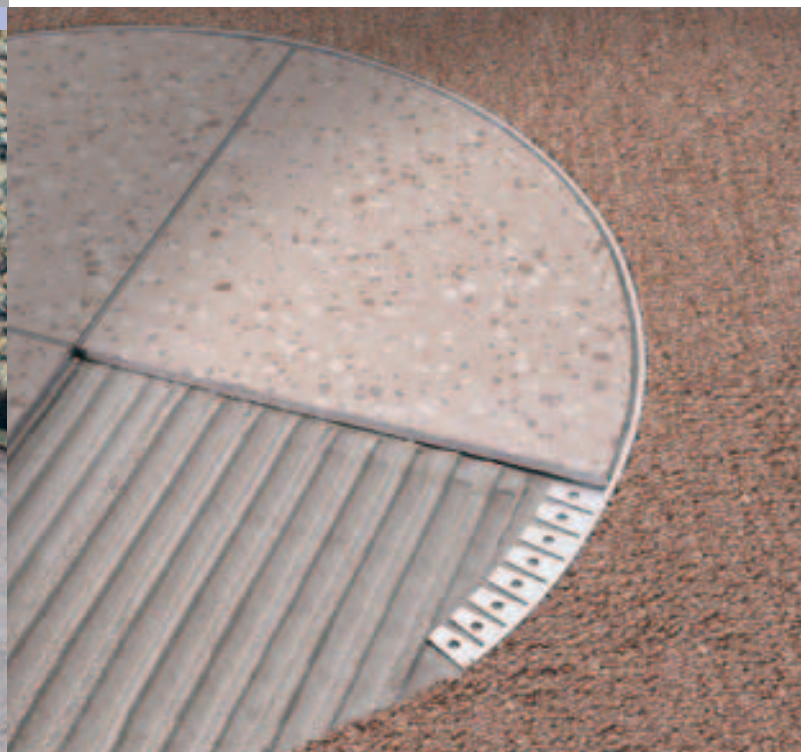
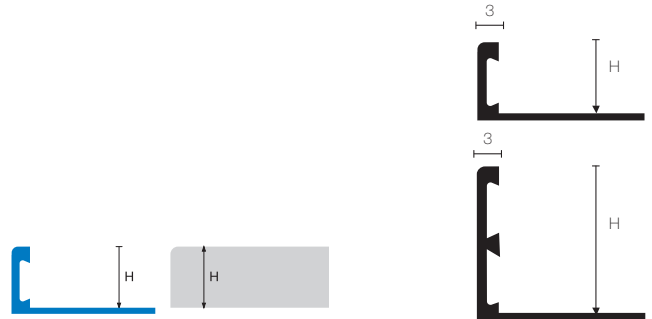


# multipurpose floor profiles

folotrim™ TR

**FOLOTRIM TR** is a complete range of brass, aluminium and stainless steel trim profiles designed to allow a faster and proper laying of floor coverings independent of tile size or type of finishing and edging required. **FOLOTRIM TR** is supplied in different heights ranging from 2 mm to 30 mm to match the thickness of tiles normally produced. The dovetail internal cavity groove of the profile improves the grip action of the grout whether for vertical or horizontal tile laying.

Illustrated scale dimension 1:1



**FOLOTRIM TR** profiles are conceived for tile laying but can be well used also with other types of flooring such as marble stone, wood, industrial resin floors, and natural stone floors.

**FOLOTRIM TR** are mainly used as transition trims between two types of floors (between tiling and carpeting for instance) and are adaptable as expansion joints when 2 lengths are laid face to face with filler poured in the gap. They can be used as ceramic skirting edging as well as terminal finish and protection for any given height of the floored area. In some cases also as entrance mat framing.

