

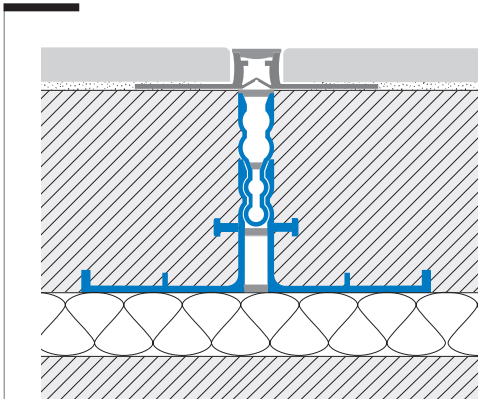
cement screed or mortar bed separation joint

coflex™ CMB

The lateral parts of the base module are in Resinil, while the linking insert is in softer synthetic resin Resinflex.

The system can be adapted to virtually any given height, thanks to the modular clip device and to the use of the available extensions, with a minimum 30 mm height and subsequent clicks at 15-20 mm height intervals.

In correspondence with screed-bed cuts and joints, it is always advisable to provide for an expansion joint also at floor level, such as a Coflex CA type, to prevent tensions accumulating on the surface along the underlying cut, with consequent cracking of the floor surfaces.



COFLEX CMB-P 23 Co-extruded Modular Synthetic Resin

The soft yet resistant plastic can withstand common chemical agents present during the work phase, with high tolerance to ageing and UV rays. The product always maintains its main characteristics of flexibility and resistance to bacteria and fungus. Suitable for both indoor and outdoor applications. It offers limited protection to the tiles edges.

Material: Resinflex + Resinil

Colour: Cement Grey

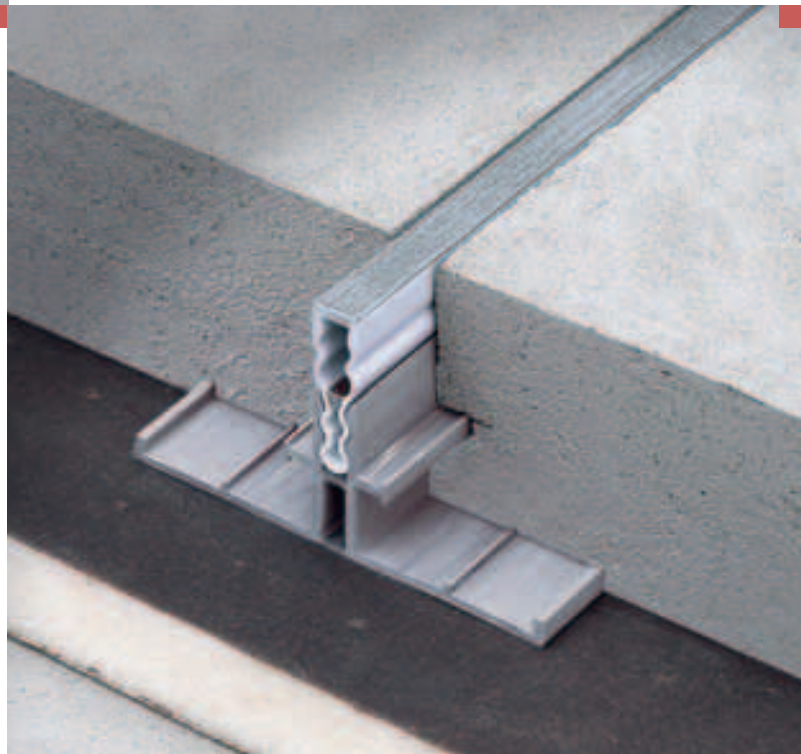
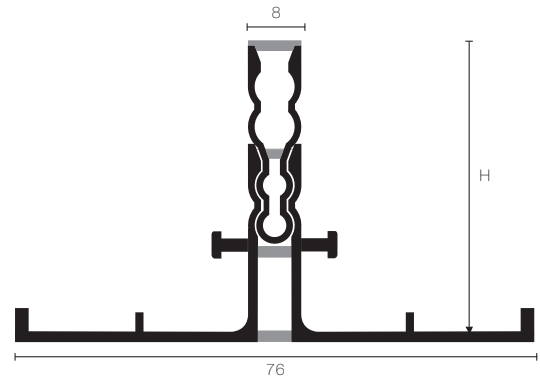
Length: 2,70 metres

Base, module CM and extension are available also separately.

For a description of Art. CM see page 105.

This movement joint profile consists of a Resinil wide base flange which can be fitted under the mortar or screed bedding to subsequently host the synthetic resin co-extruded profile insert, with an extension piece for adaptation to the mortar bed height. Conceived to properly subdivide the screed, according to the minimum bays provided in the project and in correspondence of the cast-retakes. It works also as form-work, as its wide lateral flanges keeps it easily in the right position for cement casting.

Illustrated scale dimension 1:1



H=mm	Colour	Art.	
30	Cement Grey	CMB 300 P	Opened base
30	Cement Grey	CMB 300 P 23	Closed base
45	Cement Grey	CMB 450 P 23	Base + CM module
60	Cement Grey	CMB 600 P 23	Base + extension + CM